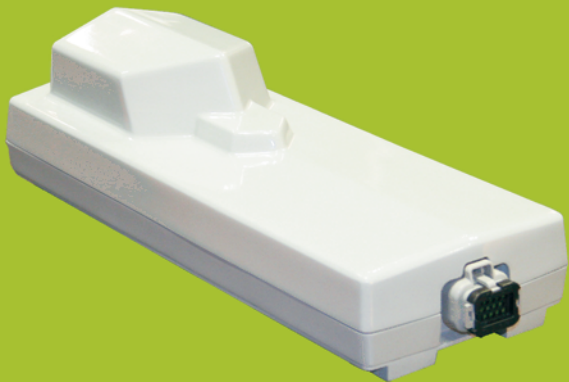


**INTRODUCING  
CONSUMPTION BILLING  
POWERED BY  
SKYTRACKER™**



**CONSUMPTION BILLING  
ALLOWS YOUR PROPANE  
DEALER TO ROUTE DELIVERY  
TRUCKS EFFICIENTLY, REDUCING  
MOTOR FUEL EMISSIONS  
MAKING PROPANE AN EVEN  
GREENER FUEL**

 **SAVES THE ENVIRONMENT**

 **SAVES MONEY**

 **REDUCES OUR DEPENDENCY  
ON FOREIGN OIL**

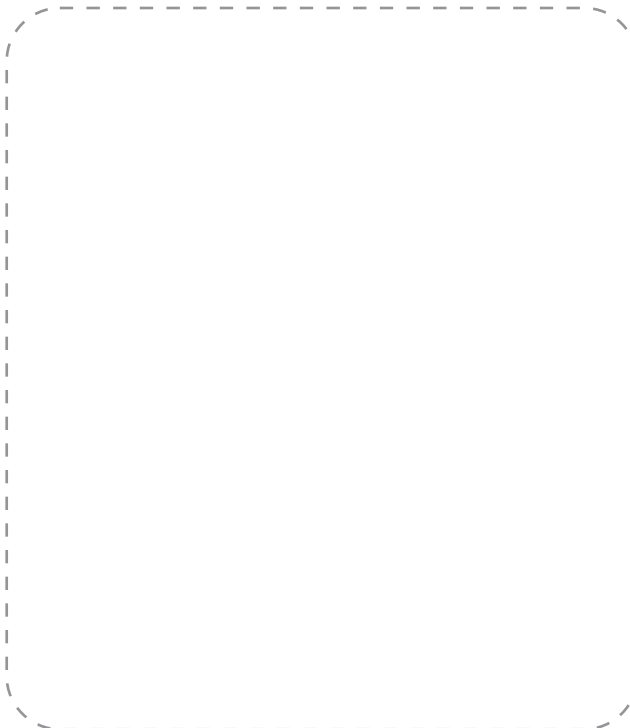


**North American Satellite Corporation**  
P.O. Box 1778  
Goodlettsville, TN 37070-1778  
Phone (615) 859-9980  
Fax (615) 859-9490  
E-Mail: [nascorp@nascorp-skytracker.com](mailto:nascorp@nascorp-skytracker.com)



**For more information visit our web site at:**  
[www.nascorp-skytracker.com](http://www.nascorp-skytracker.com)

**Or Contact Your Account Executive:**



NASCorp, SkyTracker, SkyHelp, SkyHome and the globe logo are registered trademarks of North American Satellite Corporation. All rights reserved.

**YOUR  
GREEN FUEL  
OF CHOICE...**



**...IS ABOUT TO  
GET GREENER**

# DEPENDABLE PROPANE TANK LEVEL MONITORING VIA SATELLITE

Introducing SkyTracker™, a self-contained, remote-ready, liquid tank level and home monitoring device that uses high-tech satellite communications to keep you informed of your fuel usage—from anywhere you are in the world.



### You may have had one or two choices to pay your propane energy bill in the past:

in full at time of delivery or within a few days of delivery or through a budget-pay program, where your annual estimated propane costs are divided equally over the year and you pay the same each month regardless of your actual usage. The first can be a budget buster with a \$800 to \$1,600 bill due immediately and, in the latter, you pay a set monthly fee, so you may owe your propane supplier or your propane supplier may owe you at any given time.

Today, through the technology of North American Satellite Corporation's ("NASCorp") SkyTracker™ Direct-To-Satellite Tank & SmartHome™ monitors, you and your propane supplier have a third option, Consumption Billing.

In Consumption Billing, SkyTracker's™ SkyBrain™ processor records the actual propane you have consumed over a 30-day period, so you pay for only what propane you actually used during that period. This means no more huge budget-busting bills to pay upon delivery or paying a bill in the summer months much higher than the propane you actually used.

Under Consumption Billing, your propane supplier holds the investment of the propane in the tank. It means a seamless supply of propane. This is because SkyTracker™ tells your propane dealer well in advance the liquid propane level in the tank, allowing your dealer time to schedule a delivery. You will never have to trudge out to the tank again or worry about calling for a delivery. With SkyTracker™, you will not run out of gas.

Of course, you can always log on to the NASCorp website at [www.nascorp-skytracker.com](http://www.nascorp-skytracker.com) from anywhere in the world to see the status of the tank at your home or business should you be away for any length of time. SkyTracker™ is also ideal for second or vacation homes.

(Access assigned by Dealer. MSRP is \$29.99 p/month. Check locally for actual pricing).

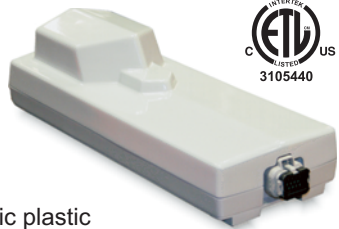
Installation of SkyTracker™ is easy, requiring only 1-3 minutes on any ASME propane tank by your propane dealer. Nothing is needed inside your home or business either; no power (SkyTracker™ is self-contained), no telephone line nor cellular contraption(s). As SkyTracker™ utilizes Low Earth Orbital (LEO) GPS satellites, there is no "rain fade", as experienced with entertainment satellite antennas. SkyTracker™, with 100% geographical coverage of North America and 95% of the world, can be used anywhere.

Data from the tank is sent in the noise spectrum, therefore it is non-detectable and non-decodable, assuring your privacy. Data is further encrypted and password-protected so only you and your propane supplier can access tank information. NASCorp's Internet infrastructure is backed by industry giants IBM and Level(3) Communications for extraordinary reliability, accessibility and security.

Under Consumption Billing, your propane use is reconciled periodically with sealed metered tickets delivered in accordance to your state's Division of Weights & Measurement requirements. SkyTracker™ is further backed by and funded through the SkyTracker™ Subscriber's Trust Agreement (SSTA), which is the only one of its kind in the industry. The SSTA assures you that tank data will always be available and screens will always stay lit, no matter what the future may hold.

Last, the propane your supplier already sells to you meets or exceeds all EPA standards for clean air. Propane is one of the cleanest "Green" fuels available today and Consumption Billing allows your propane dealer to route delivery trucks in such an efficient manner that motor fuel emissions are significantly reduced; making propane an even "greener" fuel of choice by saving the environment, and you, money!

## PRODUCT FACTSHEET



- ETL certified (UL, ANSI, CA) for use in environments where propane or other hazardous gases can be present.
- Fire-retardant ballistic plastic enclosure.
- Self-contained: does not require power or telephone lines (solar optional).
- Installs in under 3 minutes on any ASME tank.
- SkyBrain™ processor for degree day recording with K-Factor calculating ability.
- Generates alerts for event notices.
- Tank overfill or low fuel notice.
- Easy-to-read, secure Web site accessible from anywhere in the world.
- Flat array antenna SkyTracker™ can be mounted toward any sky exposure: north, south, east or west.
- RF-enabled allows external monitors to report CO, C<sub>3</sub>H<sub>8</sub>, temperature, Murphy switches, and more.

### ASK YOUR PROPANE DEALER ABOUT SKYTRACKER'S™ CONSUMPTION BILLING PROGRAM TODAY

...and when you do, ask about SkyTracker's™ SkyHelp Services™ safety and property protection monitoring, i.e. carbon monoxide (CO) and propane (C<sub>3</sub>H<sub>8</sub>) gas detection and indoor low-temperature sensing.



Customers can check tank levels and other statistics via a secure and friendly web site